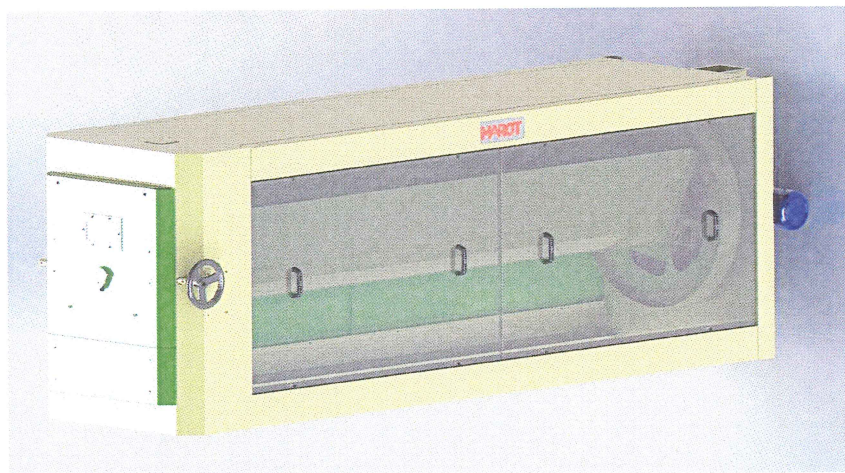


INDENTED CYLINDER Type TA 3090

MAROT[®]

UNIVERSAL IN APPLICATION

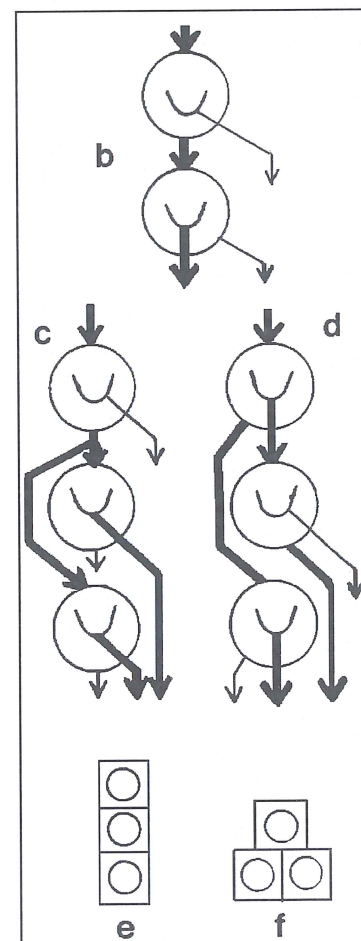
- Accurate
- Compact
- Modular
- High capacity
- Adaptable layouts
- Completely enclosed
- Adjustments at outlet
(with visual control and alteration of sample)



- * **The MAROT indented cylinder separates grains according to length** by size of the indentations in the shell. These shells are easily changed, allowing the machine to be altered to suit different lengths of grains.

The grains fall into the indents, the longer grains immediately come out of the indents, while the shorter grains stay in the indents longer before falling into the inclined screw.

- * **The indented cylinder will work:**
 - for instance on round grains by removing the shorter grains, while saving the longer grains,
 - or for instance on long grains by removing those that are even longer while conserving the shorter grains.
- * **The throughput on round grains compared to longer grains is generally the double** (5 t/h on long grains and 10 t/h on round grains for a 3090 machine).
- * **The modular conception allows for easy installation.** This concept permits various layouts within an existing installation to meet a particular requirement:
 - for simply separating round grains or long grains
 - with two units - for separating round grains and then long grains from a sample (b)
 - with three units - one for separating round grains and two for long grains (c) or with two units working on round grains and one on long grains, the former separating the different sizes of round grains (d).
- * **The units can be mounted vertically one of top of another (e) or one over two (f).**

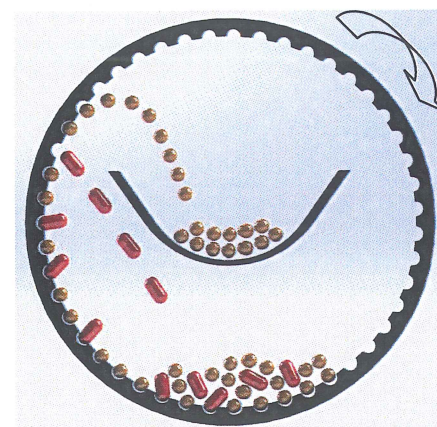




TECHNICAL DATA

- Reference TA 3090 NU: 94750
- Drive power: 2.2 kW
Variable speed 30 to 50 rpm by electronic speed inverter
- Net weight machine: 960 kg
- Option: Cover in 4 sections 2910mm length Ø 900

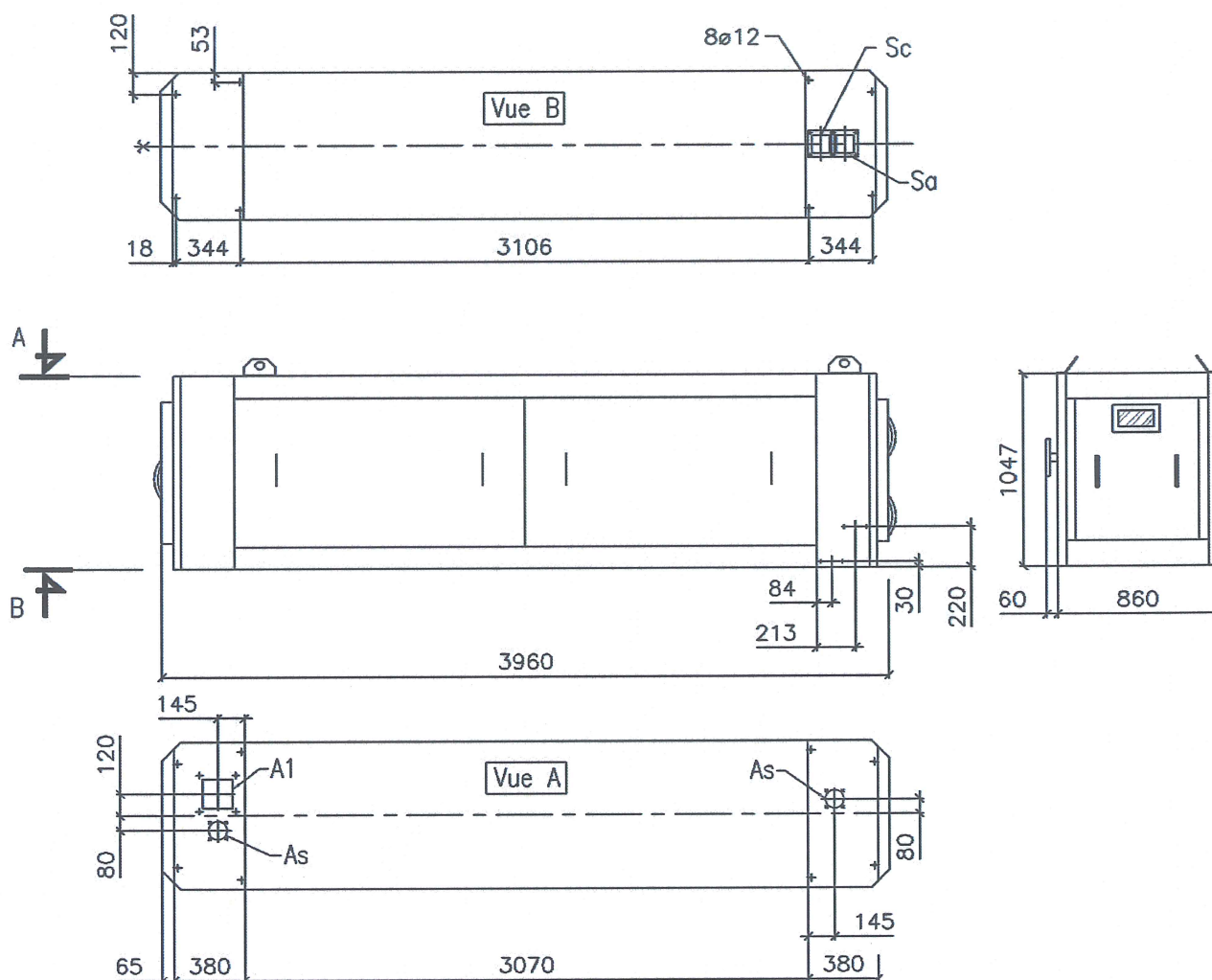
Functioning



ATTACHMENTS and ACCESSORIES

Consult us

DIMENSIONS IT 996-06



As we are constantly engaged in an effort to improve the quality and efficiency of our products, dimensions and specifications could change without notice



C.F.C.A.I. SAS Route de Montgérain - BP 4 - 60420 **TRICOT** (France)

Tél. : + 33 (0)3 44 51 53 50 - Fax : + 33 (0)3 44 51 00 84

E-mail : cfcai@groupepecf.fr - export@groupepecf.fr

RCS BEAUVAIS B 329 152 375

Propriétaire des marques : **LAW** **MAROT** **OMNIUM** **safta** **DAQUET**

